

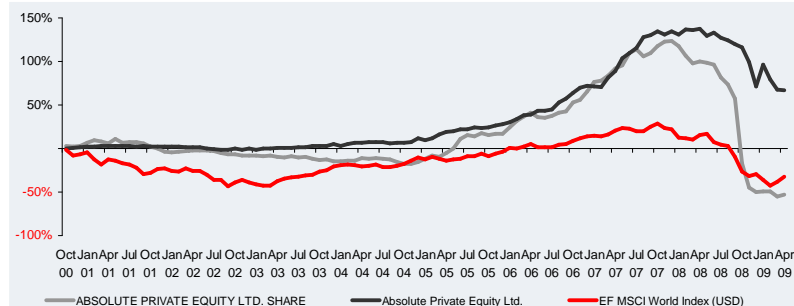
FUND DESCRIPTION

Absolute Private Equity Ltd. is an investment company incorporated in Switzerland. The company's objective is to realize compounded returns in excess of those available through conventional investments in the public equity markets. The company primarily invests in private funds, across various sectors of the private equity market focusing on US, European and other international buyout and venture capital funds.

DATA AT A GLANCE

Net asset value (NAV)	\$ 17.76
Monthly return NAV	-0.53%
Share price	\$ 4.78
Monthly return share price	3.91%
Premium/Discount	-73.09%

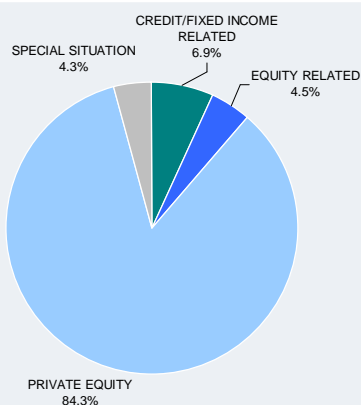
CUMULATIVE RETURN



RISK AND RETURN ANALYSIS NAV

Historical annualized return	6.16%
Historical annualized volatility	10.67%
Skewness	-0.35
Excess kurtosis	9.02
Normal monthly VaR 99%	-6.67%
Modified monthly VaR 99%	-13.81%
Conditional monthly VaR 99%	-11.36%
Max monthly loss	-13.97%
Correlation to EF MSCI World Index (USD)	0.10
Beta to EF MSCI World Index (USD)	0.06
Bear Beta to EF MSCI World Index (USD)	0.16
Historical Annual Sharpe Ratio (Rf=5.0%)	0.11
Max drawdown	-29.59%
Date of Max Drawdown	30.04.2009
Max possible drawdown 99.9%	-41.43%

PORTFOLIO WEIGHTS



PRODUCT DETAILS

Investment Manager	Pearl Investment Management Ltd.
Investment Advisor	Absolute Investment Services Ltd. Merchant Capital Inc.
Base Currency	US\$
Credit Utilization	23'000'000
Swiss Security Number	4292738
ISIN Code	CH0042927381
Reuters Code	ABSP.S
Bloomberg Code	ABSP SW
Total committed Capital	\$ 1'323'135'030
Absolute Private Equity Capital	\$ 798'860'908
Over/under committed Capital	\$ 524'274'123
Commitment level in %	165.63%
CONTACT DETAILS	
Main Address	Absolute Investment Services Ltd. Börsenstrasse 26 CH-8001 Zurich
Phone Number	+41 43 888'63'00
Website	www.absoluteinvestments.com

HISTORICAL MONTHLY RETURNS NET ASSET VALUE

	Jan	Feb	Mar	Apr	May	Jun	Jul	Aug	Sep	Oct	Nov	Dec	Total
2000											0.38%	0.94%	1.32%
2001	0.93%	-0.18%	0.74%	-0.18%	0.37%	0.20%	-0.51%	-0.20%	0.15%	-0.53%	-0.02%	-0.17%	0.58%
2002	0.22%	-0.20%	-0.26%	-0.25%	-0.24%	-1.13%	-0.84%	-0.97%	0.50%	0.98%	-0.85%	0.91%	-2.12%
2003	-1.19%	1.13%	0.23%	0.83%	-0.30%	0.28%	1.01%	0.03%	1.04%	0.32%	-0.45%	2.30%	5.31%
2004	-1.91%	1.94%	1.45%	0.25%	0.77%	-0.32%	0.30%	-1.33%	0.45%	0.20%	0.25%	4.35%	6.44%

As of 01.01.2005 ABSOLUTE INVESTMENT SERVICES LTD. took over a partial advisory role. The initial build-up of the portfolio completed, the strategy was adapted to a more diversified fund strategy focusing on US, European and other international buyout and venture capital funds.

2004	-1.91%	1.94%	1.45%	0.25%	0.77%	-0.32%	0.30%	-1.33%	0.45%	0.20%	0.25%	4.35%	6.44%
2005	-2.26%	2.58%	3.67%	2.34%	0.99%	1.49%	0.06%	1.93%	-0.62%	0.35%	1.88%	1.23%	14.38%
2006	1.93%	2.39%	3.46%	0.75%	2.94%	0.35%	0.64%	5.87%	2.51%	4.60%	3.46%	1.24%	34.48%
2007	-0.26%	-0.43%	6.22%	4.26%	7.61%	3.10%	2.79%	5.81%	0.83%	1.89%	-1.49%	1.50%	36.33%
2008	-1.41%	2.55%	-0.31%	0.39%	-3.19%	1.41%	-2.32%	-1.32%	-2.09%	-1.61%	-7.90%	-13.97%	-26.91%
2009	14.59%	-8.75%	-6.28%	-0.53%									-2.52%

HISTORICAL MONTHLY RETURNS SHARE PRICE

	Jan	Feb	Mar	Apr	May	Jun	Jul	Aug	Sep	Oct	Nov	Dec	Total
2000													
2001						-3.57%	0.46%	0.00%	-1.37%	-3.70%	-1.73%	-4.01%	-13.21%
2002	-0.92%	0.82%	1.02%	0.61%	0.00%	0.00%	-0.80%	-2.33%	-1.04%	0.00%	-1.57%	-0.21%	-4.38%
2003	-0.21%	-0.75%	0.43%	-1.61%	-0.11%	1.53%	-1.93%	1.20%	-2.49%	-1.89%	1.02%	-2.69%	-7.36%
2004	0.00%	1.27%	-0.80%	3.67%	-0.55%	0.56%	-0.55%	-1.22%	-3.49%	-2.45%	0.36%	2.38%	-1.04%

As of 01.01.2005 ABSOLUTE INVESTMENT SERVICES LTD. took over a partial advisory role. The initial build-up of the portfolio completed, the strategy was adapted to a more diversified fund strategy focusing on US, European and other international buyout and venture capital funds.

2005	4.42%	3.90%	-1.07%	4.88%	4.96%	11.22%	4.42%	-1.44%	3.01%	-1.50%	0.76%	0.34%	38.72%
2006	6.12%	5.92%	4.18%	2.86%	-3.69%	-0.43%	1.52%	2.79%	0.97%	7.44%	1.92%	6.10%	41.41%
2007	6.70%	0.83%	3.42%	4.00%	2.15%	7.02%	2.16%	-3.67%	1.81%	3.65%	2.53%	0.35%	35.16%
2008	-2.63%	-5.23%	-4.28%	1.29%	-0.78%	-1.19%	-7.50%	-4.59%	-9.07%	-47.35%	-33.73%	-8.93%	-77.63%
2009	1.76%	-0.77%	-10.68%	3.91%									-6.28%

DISCLAIMERS

Past performance is no guarantee of future results. Performance figures are estimated net of management and performance fees and are subject to change.

Neither this document nor any copy hereof may be sent or taken or transmitted into the United States or distributed, directly or indirectly, in the United States or to any U.S. person. Any failure to comply with this restriction may constitute a violation of U.S. securities laws. The securities issued by Absolute Private Equity Ltd. have not and will not be registered under the Securities Act of 1933 of the United States of America. This document is being furnished to you solely for your information and may not be reproduced or redistributed to any other person. This document does not constitute an offer to sell, or a solicitation of an offer to purchase, any securities. This document does not constitute a prospectus in the sense of Art. 652a resp. Art 1156 of the Swiss Code of Obligations.